

CMAQ simulation results for ozone

Simulations with different inventories:

- National Emission Inventory 1999, NEI
- Texas Emission Inventory 2000, TEI

and with different chemical mechanisms:

- CB4
- SAPRC99
- SAPRC99ext (UH version)

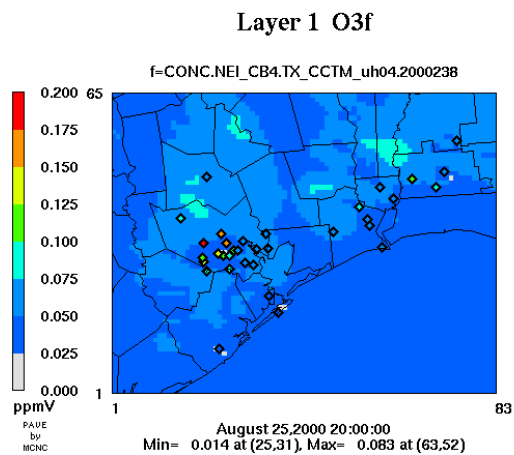


Figure 1 O3 from NEI, CB4 for Aug. 25, 2000 at 20:00 UTC (2:00 pm CST)

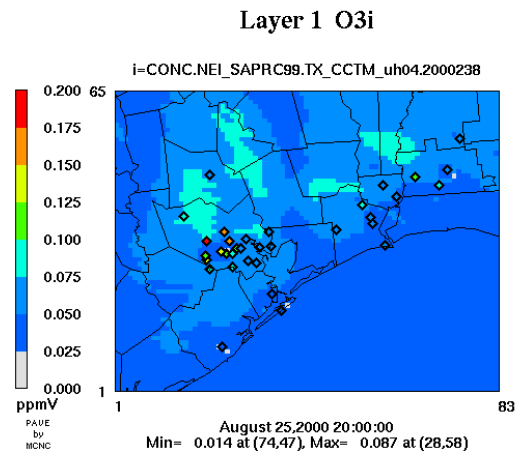


Figure 2 O3 from NEI, SAPRC99 for Aug. 25, at 2000 20:00 UTC (2:00 pm CST)

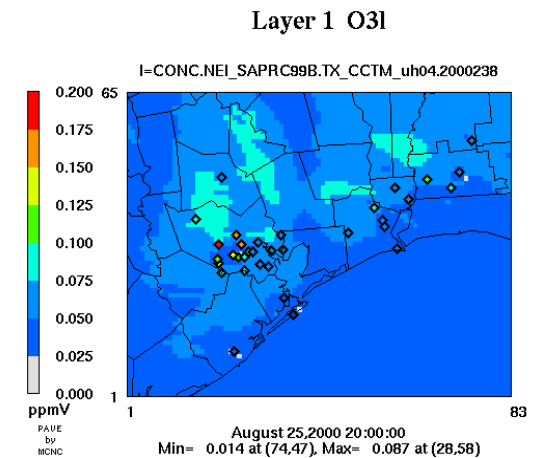


Figure 3 O3 from NEI, SAPRC99ext for Aug. 25, 2000 at 20:00 UTC (2:00 pm CST)

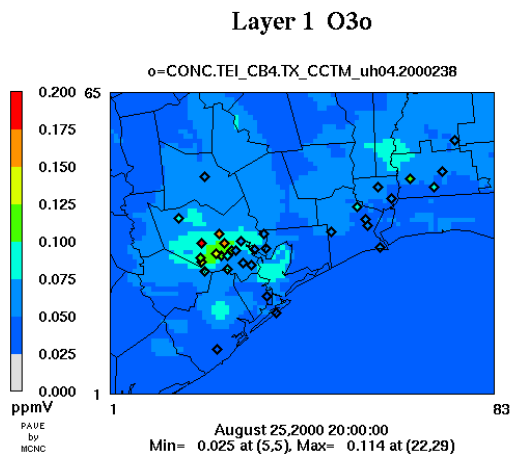


Figure 4 O3 from TEI, CB4 for Aug. 25, 2000 at 20:00 UTC (2:00 pm CST)

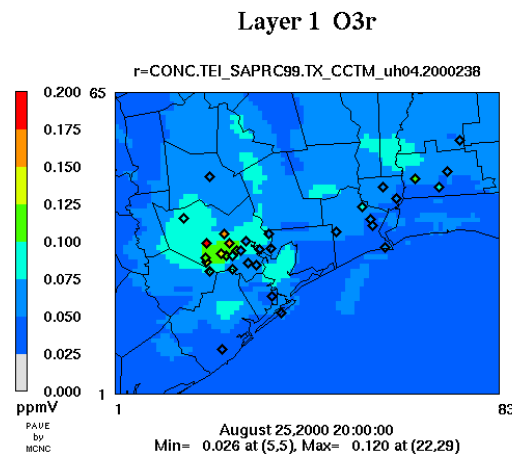


Figure 5 O3 from TEI, SAPRC99 for Aug. 25, 2000 at 20:00 UTC (2:00 pm CST)

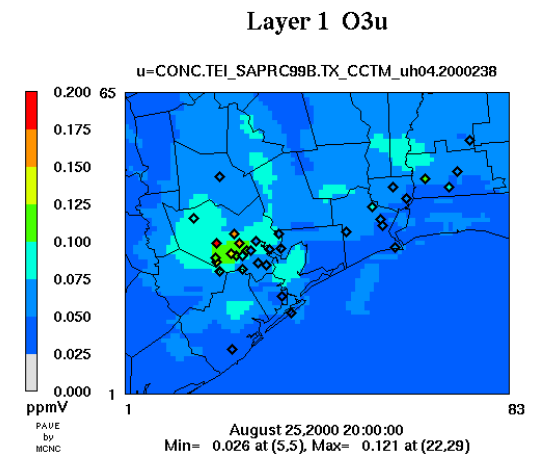


Figure 6 O3 from TEI, SAPRC99ext for Aug. 25, 2000 at 20:00 UTC (2:00 pm CST)

Process Analysis results of formaldehyde formation with TEI for CB4, SAPRC99 and SAPRC99ext mechanisms, at 1 pm CST, August 25, 2000.

Layer 1 (HCHOfromETHp)*1000

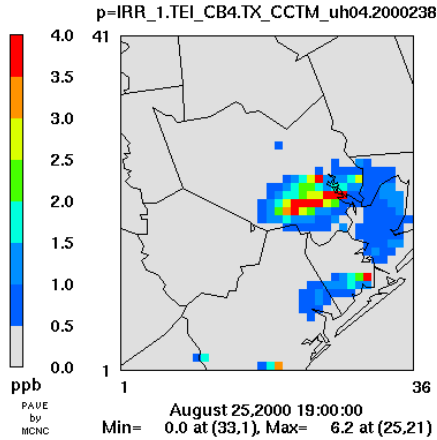


Figure 7 Formaldehyde produced from ethylene simulated with TEI, CB4 for Aug. 25, 2000 at 19 UTC (1 pm CST)

Layer 1 (HCHOfromOLEp)*1000

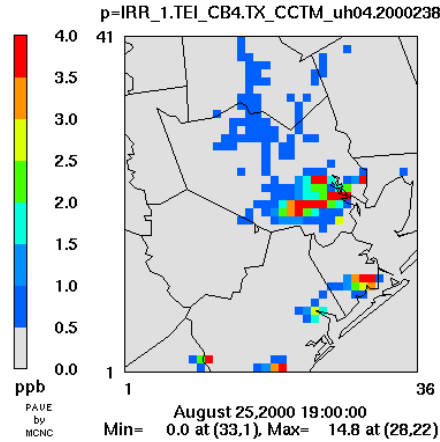


Figure 8 Formaldehyde produced from OLE surrogate simulated with TEI, CB4 for Aug. 25, 2000 at 19 UTC (1 pm CST)

Layer 1 (HCHOfromETHs)*1000

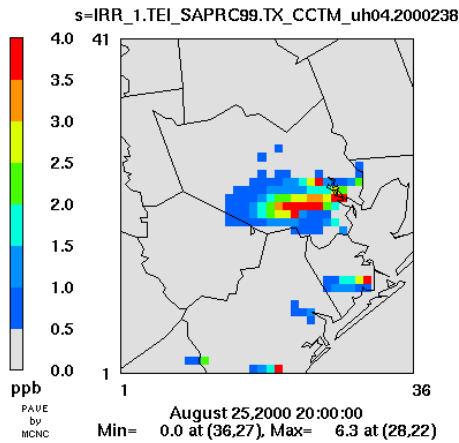


Figure 9 Formaldehyde produced from ethylene simulated with TEI, SAPRC99 for Aug. 25, 2000 at 19 UTC (1 pm CST)

Layer 1 (HCHOfromOLE1s)*1000

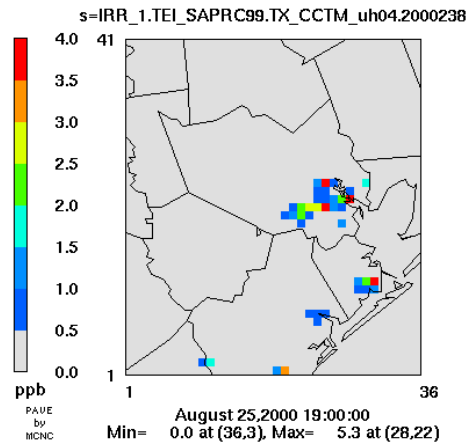


Figure 10 Formaldehyde produced from OLE1 surrogate simulated with TEI, SAPRC99 for Aug. 25, 2000 at 19 UTC (1 pm CST)

Layer 1 (HCHOfromPROPM)*1000

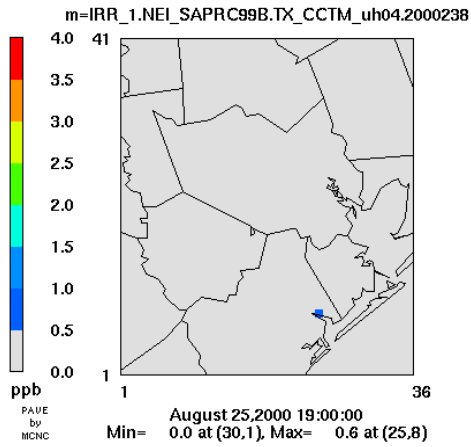


Figure 11 Formaldehyde produced from propylene simulated with NEI, SAPRC99ext for Aug. 25, 2000 at 19 UTC (1 pm CST)

Layer 1 (HCHOfromPROPV)*1000

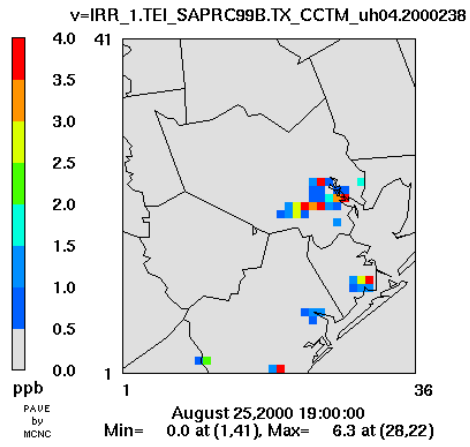
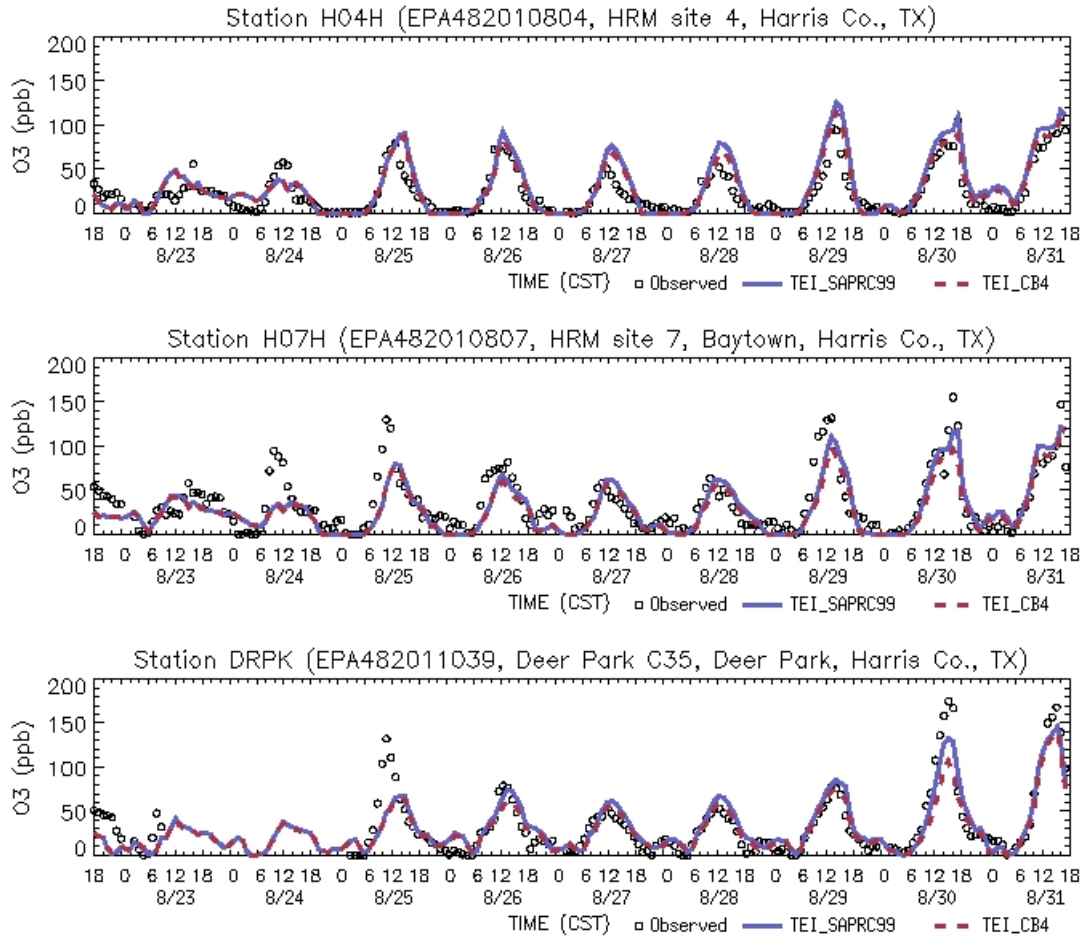


Figure 12 Formaldehyde produced from propylene simulated with TEI, SAPRC99ext for Aug. 25, 2000 at 19 UTC (1 pm CST)

The comparison of simulated ozone and nitrogen oxide concentration against cams data for TEI, CB4 and TEI, SAPRC99



The comparison of simulated species concentration with SAPRC99ext mechanism against Clinton side data for NEI and TEI

